

## TECHNICAL SPECIFICATION

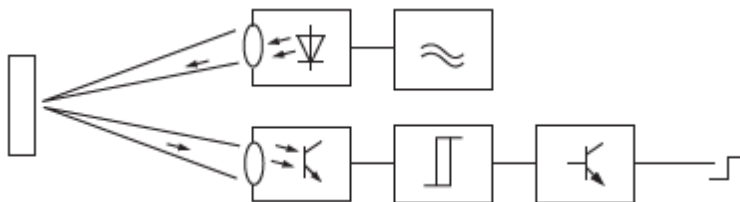
### Photoelectrical sensor

#### Description:

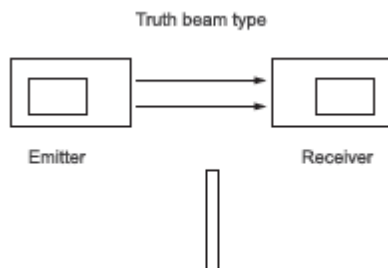
Photoelectrical sensors of the Gxx series are all-purpose switches used in machine systems and equipment for no contact surveillance of motion of elements. They are based on the photoelectric principle of operation – inside the sensor there is a photo signal emitter and receiver of the returned signal. There are three types of sensors: diffuse sensors, reflector sensors and emitter-receiver sensors. These types of sensors differ in the way of returning the signal. They allow for gearing distance adjustment. They are developed on the base of PNP and NPN transition. They have small dimensions and feature a metal cylindrical shell resistant to vibrations and a plastic lid which is oil and water resistant.

#### Technical data:

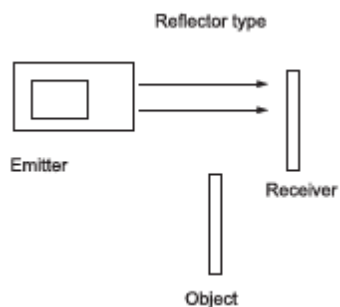
- Insulating resistance:  $\geq 50 \text{ M } \Omega$
- Gearing distance: from 2 mm to 7 mm
- Precision of repetition: 0.01
- Ambient temperature:  $-25^{\circ}\text{C}$  to  $+70^{\circ}\text{C}$
- Gearing speed: 5mm/s
- Rated voltage: 6~36VDC; 90~230VAC
- IP code: IP 67



## Variants and dimensions:



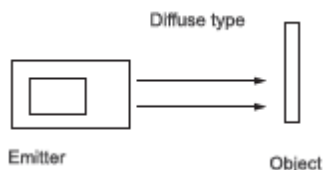
Type	Start distance	Power supply voltage	Type of transition	Type of contact	Type of sensor
G12-3A07NA	70mm	15~30VDC	NPN	Ø12; l=50	Diffuse
G12-3A07PA	70mm	15~30VDC	PNP	Ø12; l=50	Diffuse
G12-3B1NA	1m	15~30VDC	NPN	Ø12; l=50	Reflector
G12-3B1PA	1m	15~30VDC	PNP	Ø12; l=50	Reflector
G12-3C3NA	3m	15~30VDC	NPN	Ø12; l=50	Truth beam
G12-3C3PA	3m	15~30VDC	PNP	Ø12; l=50	Truth beam



Type	Start distance	Power supply voltage	Type of transition	Type of contact	Type of sensor
G18-3A10NA	100 mm	15~30VDC	NPN	Ø18; l=70	Diffuse
G18-3A10PA	100 mm	15~30VDC	PNP	Ø18; l=70	Diffuse
G18-3B2NA	2 m	15~30VDC	NPN	Ø18; l=70	Reflector
G18-3B2PA	2 m	15~30VDC	PNP	Ø18; l=70	Reflector
G18-3C5NA	5 m	15~30VDC	NPN	Ø18; l=70	Truth beam
G18-3C5PA	5 m	15~30VDC	PNP	Ø18; l=70	Truth beam



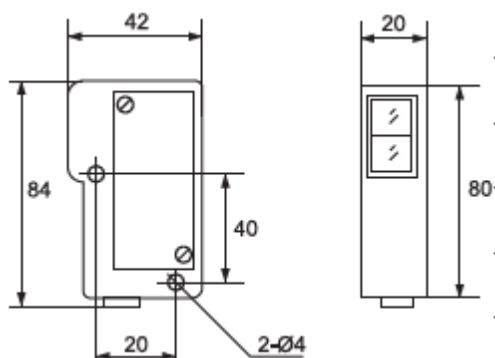
EL-G30



Type	Start distance	Power supply voltage	Type of transition	Type of contact	Type of sensor
G30-3A70NA	500 mm	15~30VDC	NPN	Ø22; l=70	Diffuse
G30-3A70PA	500 mm	15~30VDC	PNP	Ø22; l=70	Diffuse
G30-3B3NA	3 m	15~30VDC	NPN	Ø22; l=70	Reflector
G30-3B3PA	3 m	15~30VDC	PNP	Ø22; l=70	Reflector
G30-3C101NA	10 m	15~30VDC	NPN	Ø22; l=70	Truth beam
G30-3C101PA	10 m	15~30VDC	PNP	Ø22; l=70	Truth beam



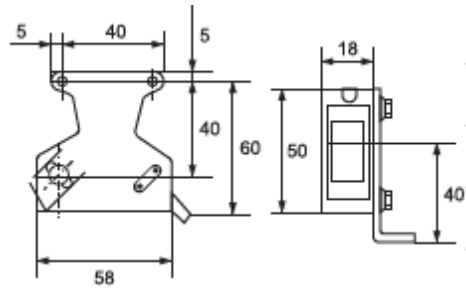
EL-G35



Type	Start distance	Power supply voltage	Type of transition	Type of contact	Type of sensor
G35-3A50NA	500 mm	15~30VDC	NPN	NO	Diffuse
G35-3A50PA	500 mm	15~30VDC	PNP	NO	Diffuse
G35-3B3NA	3 m	15~30VDC	NPN	NO	Reflector
G35-3B3PA	3 m	15~30VDC	PNP	NO	Reflector
G35-3C5NA	5 m	15~30VDC	NPN	NO	Truth beam
G35-3C5PA	5 m	15~30VDC	PNP	NO	Truth beam



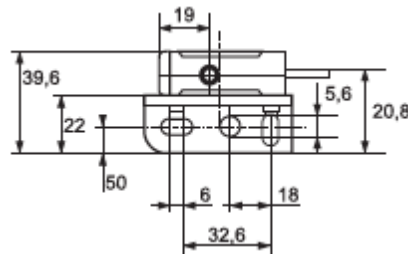
EL-G50



Type	Start distance	Power supply voltage	Type of transition	Type of contact	Type of sensor
G50-3A30NA	500 mm	15~30VDC	NPN	NO	Diffuse
G50-3A30PA	500 mm	15~30VDC	PNP	NO	Diffuse
G50-3B4NA	3 m	15~30VDC	NPN	NO	Reflector
G50-3B4PA	3 m	15~30VDC	PNP	NO	Reflector
G50-3C5NA	5 m	15~30VDC	NPN	NO	Truth beam
G50-3C5PA	5 m	15~30VDC	PNP	NO	Truth beam



EL-BZJ



Type	Start distance	Power supply voltage	Type of transition	Type of contact	Type of sensor
BZJ-211	10mm	15~30VDC	Reflector	NO	Colour detection
BZJ-311	9mm	15~30VDC	Reflector	NO	Colour detection
BZJ-411	9mm	15~30VDC	Reflector	NO	Colour detection

